

Sabah on becoming part of Malaysia

The name Sabah was already in use before Europeans arrived in this part of Borneo. The ruling North Borneo Chartered Company in their earliest official documents often referred to this territory as Sabah. There are many theories as to the meaning and origin of this name. The most plausible is that it was derived from an old Brunei Malay word meaning "upstream" or "in a northerly direction"(Maxwell). This most certainly applied to the western part of the state and we have no idea how the Suluks referred to the eastern part of North Borneo which had been under the control of the Sulu Sultanate since the middle of the 17th century.

The state legislative annual report for 1963 declared that the name was changed from North Borneo to Sabah on independence from Britain on 31 August 1963. The formation of the Federation of Malaysia was intended to have been 31 August 1963 as well but was delayed to 16 September of the same year due to objections from Indonesia and the Philippines.

This display includes;

1. Early Sabah/Malaysia covers with North Borneo postmarks
2. The changeover from North Borneo to Sabah postmarks
3. The use of North Borneo stamps with Sabah Malaysia postmarks
4. The postal rates and changes
5. The use of North Borneo and Sabah stamps in the other Malaysian states

References;

1. Maxwell, Allen R (1981/1982). The origin of the name "Sabah". Sabah Society Journal, v.7p91
2. Proud, Edward B (2003). The Postal History of British Borneo
3. Proud, Edward B (2000). The Postal History of Malaya Vol. 1
4. Straits Times Archives, various. <http://eresources.nlb.gov.sg/newspapers/>
5. Liau, Fah Onn (2018). The Postal History of Sabah On Becoming Part Of Malaysia. The Malayan Philatelist Vol. No.4 pp97-102

Sabah on becoming part of Malaysia

Malaysia Day



Postmarked Sandakan North Borneo on Malaysia Day 16 SEP 63
The Berjaya Malaysia label covers the printed date 31 hb Ogos 1963



Postmarked Jesselton North Borneo 16 SEP 63
North Borneo became Sabah on 31 August 1963

Sabah on becoming part of Malaysia

Early commercial covers



Tawau North Borneo 9OC63 2x15c double airmail rate to Singapore



Jesselton North Borneo 28 NO 63 75c airmail rate to GB

Mixed franking of North Borneo and Malaysia stamps

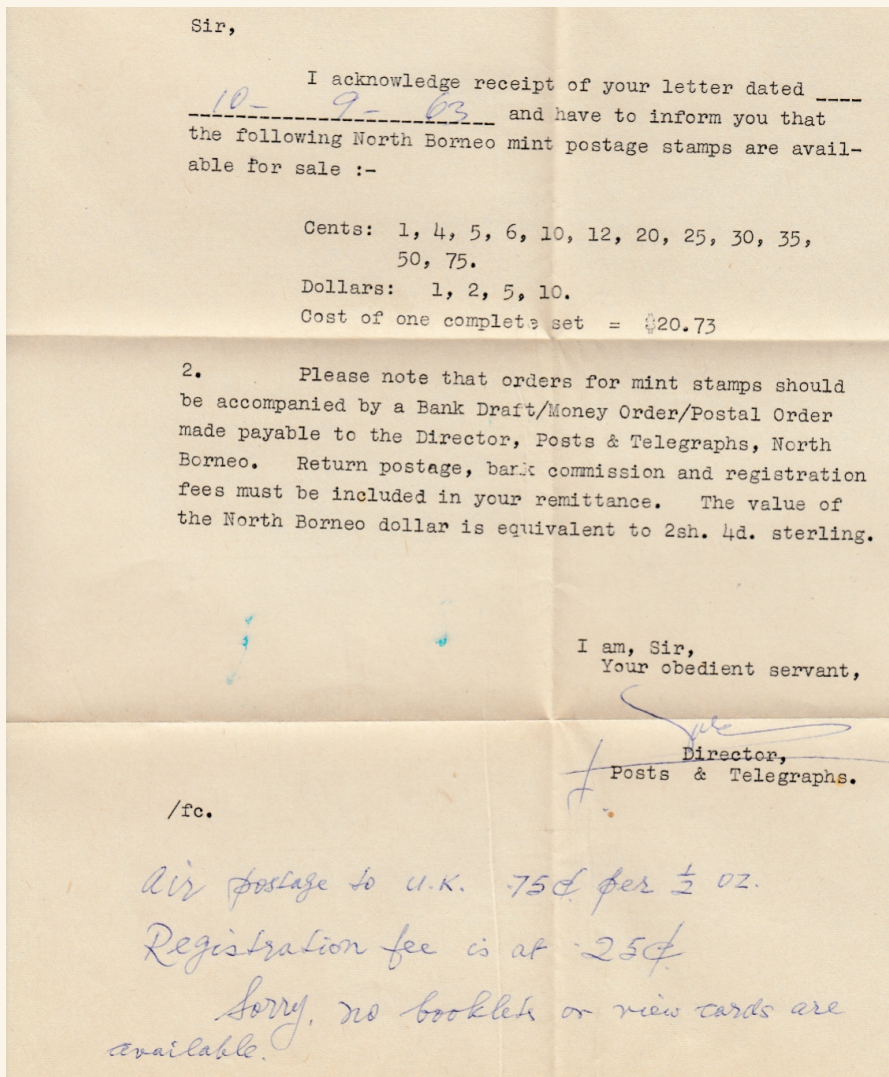
Colonial postmark and stamp being used

Sabah on becoming part of Malaysia

Post Office Correspondence



Jesselton North Borneo 26 OC 63 mixed franking 15c surface rate to GB



Enclosed letter with concurrent postal information

Sabah on becoming part of Malaysia

Triple Ring Sabah Malaysia

For the month of June 1964 only, a temporary cachet was used.

This was most probably applied on mail passing through the GPO at Jesselton



Triple ring Jesselton North Borneo 25 JU 64 20c airmail rate to other Malaysia states



Triple ring Tawau North Borneo 8JE64 12c local airmail rate

Sabah on becoming part of Malaysia

North Borneo stamp covers with Sabah Malaysia postmarks

The stamps overprinted Sabah and the date stamps were issued on 1 July 1964



Jesselton Sabah Malaysia 4JUL64 with 75c airmail rate to GB

Official colonial envelope addressed to the Crown Agents

Early continual use of colonial era stamp



Jesselton Sabah Malaysia 10MAY67 with 18c airmail rate to Singapore

Late use of the not overprinted North Borneo stamps which were valid until 1974

The rate within Malaysia was 15c but Singapore left the federation on 9 August 1965

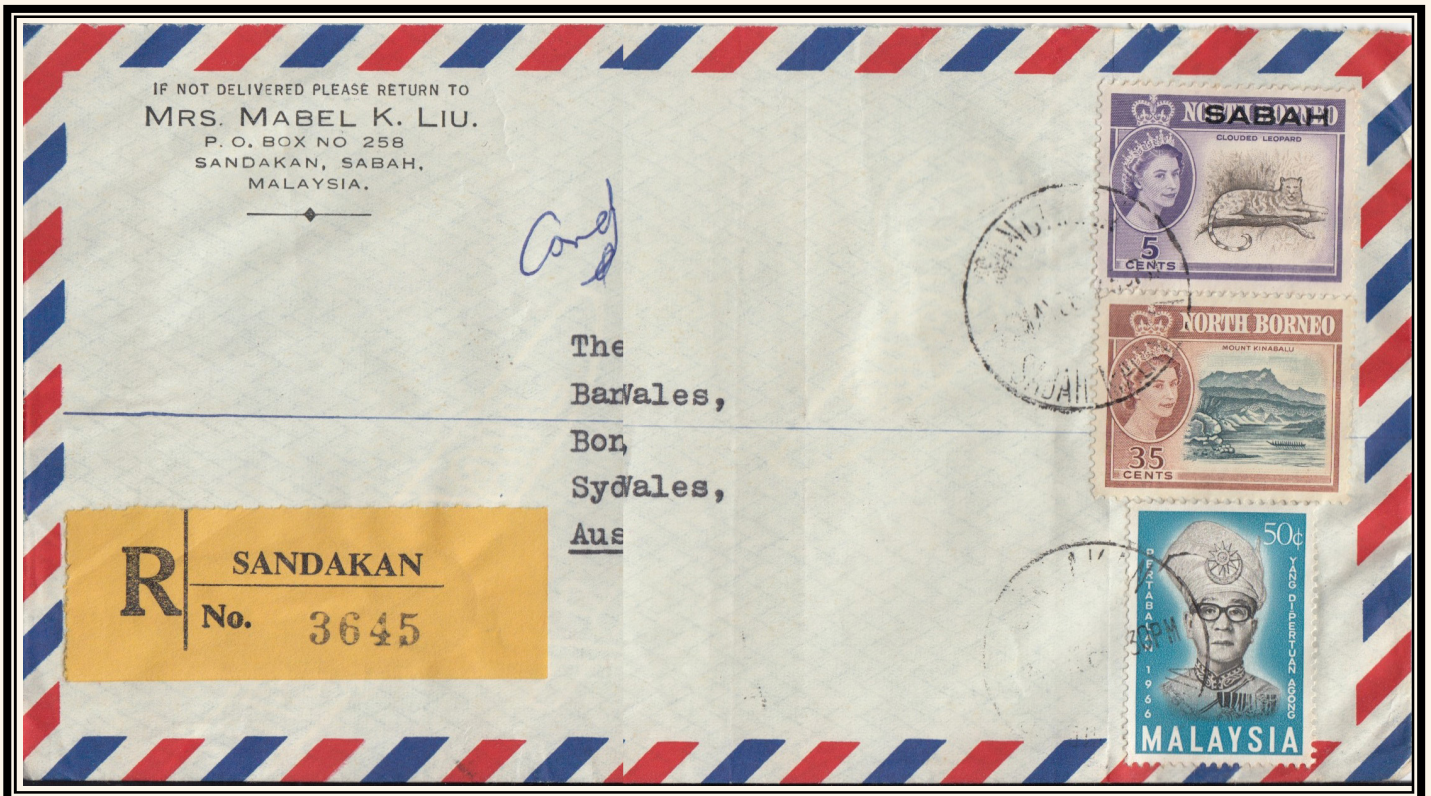
Sabah on becoming part of Malaysia

Use of colonial stamps and rare mixed franking of North Borneo, Sabah and Malaysia stamps



Labuan Sabah Malaysia 6JUL64 35c air letter rate to GB

Letter was written in nearby Lawas, north Sarawak



Mid folded long envelope with rare mixed franking

Sandakan Sabah Malaysia 23MAY66 with North Borneo, Sabah and Malaysia stamps

A probable 65c+25c airmail registered rate to Australia

Sabah on becoming part of Malaysia

North Borneo stamps with various Sabah town cancels



Jesselton Sabah Malaysia 1JUL64

The first day of issue of the Sabah town date stamps



Part Jesselton Sabah Malaysia cancellations



Part Beaufort, Lahad Datu, Railway TPO Sabah Malaysia cancellations



Part Tawau, Sandakan Sabah Malaysia cancellations

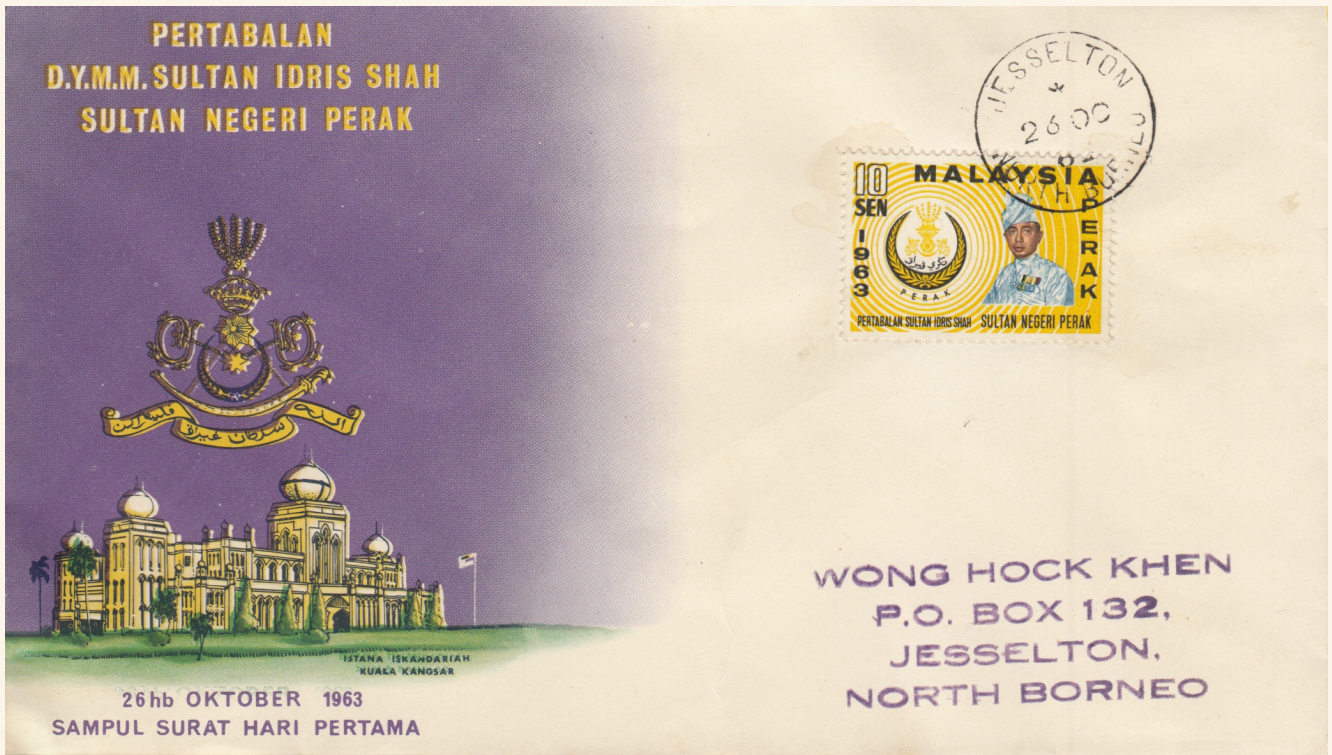


Unidentifiable Sabah town cancellations

The North Borneo \$10 stamp with a Sabah cancellation is rare

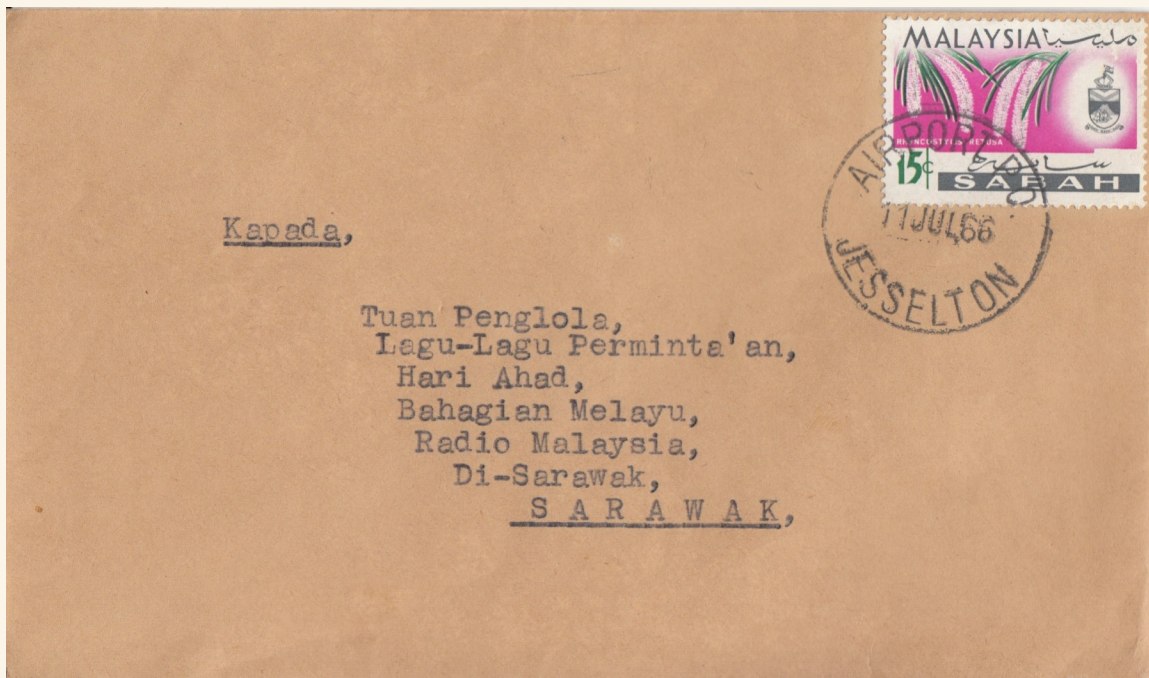
Sabah on becoming part of Malaysia

The changes to the postal services was complicated by the differences in postal rates between the different territories and also the initial non interchangeability of the stamps. By May 1964, North Borneo stamps were valid in Sarawak, Singapore and Malaya and vice versa.



A Perak 10c postmarked Jesselton 26 OC 63 showing the local rate

But Perak stamps were not valid in Sabah before 15 May 1964



Airport PO Jesselton 11JUL66 with the unified country airmail rate of 15c

Sabah on becoming part of Malaysia

The use of North Borneo stamps in the other Malaysian states was valid from May 1964



A rare cover from Sungei Lembing Pahang to Germany dated 19JUN64

Mixed franking of North Borneo and Pahang colonial era stamps

90c first class airmail rate to Europe



The back of the cover has a North Borneo and a Pahang stamps

It was sent from the mine department of the Pahang Consolidated Company Limited

Sabah on becoming part of Malaysia

The use of North Borneo stamps in the other Malaysian states was valid from May 1964



A rare commercial registered cover from Maran Pahang to Belgium dated 27 JUL 64

Mixed franking of North Borneo and Sarawak colonial era stamps

90c airmail + 25c registration rate to Europe



The back of the cover franked with Sarawak stamps

There is a long 4 page letter within written in French

The sender was attached to the Aborigines Department at Chini Lake in Pahang

Sabah on becoming part of Malaysia

The use of North Borneo and Sarawak stamps at Kuala Lumpur



An uncommon registered AR cover from Kuala Lumpur to India dated 31OCT64

Mixed franking of North Borneo and Sarawak colonial era stamps

The total of \$1.12 covered the airmail rate, registration and Avis de reception fees



The front of the cover bears the Kuala Lumpur registration label

In the top right hand corner is *AR* in manuscript and also 10 cents implied fee

The use of the postal service of AR was apparently popular in India

Sabah on becoming part of Malaysia

The use of North Borneo and Sabah stamps at Kuching



Unusual uncommon combination

North Borneo, Sabah, Sarawak and
Malaysia stamps

North Borneo 1961 issue still in use

Issue overprinted SABAH 1 July 1964

Cover cancelled at Kuching 1 JY 64 for
first day of use for the Sabah issue

Unusually, the upper corner block of
Sabah 5c stamps shows both the old
and the new stamp sheet numbers

Sabah on becoming part of Malaysia

Stamp combination cover used at Kuala Lumpur



A registered combination cover from Kuala Lumpur dated 25FE66

Mixture of Malaysia, Sarawak and Sabah stamps

The total cost of 96c shows a reduction in rate to 1964



The back has a block of 4 Sabah first issue stamps

There are transit airport post office cancellations from Kuala Lumpur and Singapore

Sabah on becoming part of Malaysia

North Borneo and Sabah stamps on covers cancelled at Singapore



A total of 75c for the airmail rate to GB and cancelled 30JAN64 at Singapore
 This was significantly before North Borneo stamps were valid at Singapore in May 1964
 The cover actually originated from FPO 1044 Brunei with backstamp date of 28 JA 64



Sabah stamps used at Singapore Airport at 30c for the second class airmail rate

It was sent to Athens Greece and marked *Retour* in manuscript

Sabah on becoming part of Malaysia

North Borneo and Sabah stamps used at Singapore



North Borneo adhesives



Sabah adhesives

Cancelled at Singapore including a machine obliterator with slogan

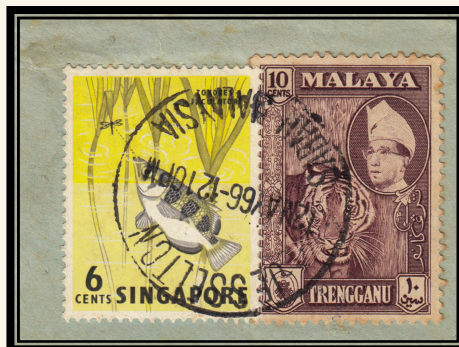


Sabah \$10 stamps with Killiney Rd Singapore 9 parcel cancellations

There was a need for a high denominated stamp at the Singapore post offices



Singapore Serangoon Rd and Killiney Rd parcel cancellations respectively



Very rare usage of Singapore and Trengganu stamps at Jesselton dated 12MAY66

Stamps of other states were available at the stamp bureau at Jesselton GPO

Singapore left the federation on 9 August 1965 but their stamps were valid till Jan 1967